

# Glen Oroua - Taikorea Community Committee Plan

March 2025



# Contents

- What you will find in this Plan..... 2
- Glen Oroua-Taikorea ‘Back in the Day’ ..... 3
- Community Planning Day..... 5
- The Things We Like About Living in Glen Oroua-Taikorea ..... 7
- Vision Statement ..... 8
- Directions Towards Improvement ..... 9
- People .....10
- Environment.....11
- Infrastructure .....12



## What you will find in this Plan



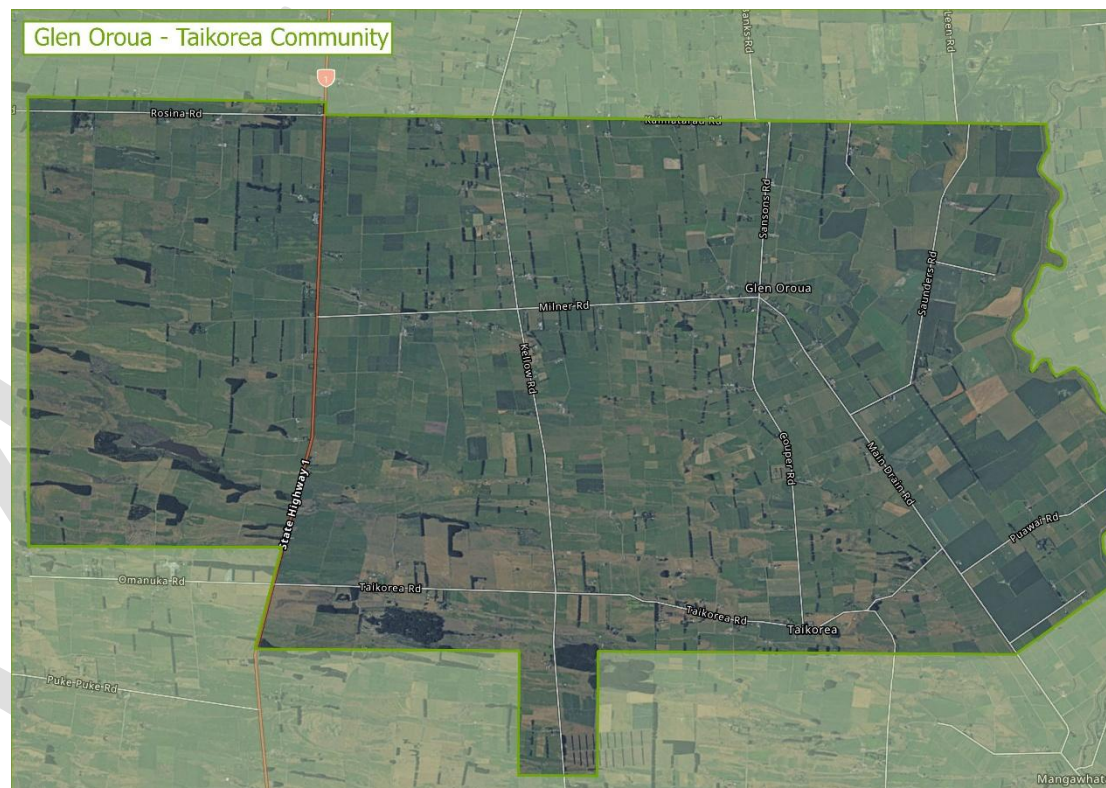
This Community Plan has been prepared on behalf of the Glen Oroua-Taikorea community which covers the area outlined in the map below.

The content in this Community Plan is a summary of

discussions from a community planning workshop held in November 2022.

The Community Plan provides:

- History of Glen Oroua-Taikorea;
  - A summary of the Community Planning process;
  - A shared community vision statement;
  - Three strategies that will help implement the vision;
  - A list of actions that have come from the community
- This Community Plan is intended to be a living document that is updated and refreshed on a regular basis. Please contact the Glen Oroua-Taikorea Community Committee for further information on this Community Plan.



## Glen Oroua-Taikorea ‘Back in the Day’

### Glen Oroua - Taikorea Community

Glen Oroua-Taikorea is a rural district about 9km from the west coast in the lower North Island. The landscape is varied: river flats to the east, clay soils and sand country to the west.

Maori in the Manawatu lived mainly on the river banks and around lagoons, gathering food and materials such as flax from swamps. The open sand country was used to transit between the Oroua and Rangitikei Rivers. The nearest marae has always been Rangiotu.

The first European settlers arrived in 1879 after the Douglas Settlement Block had been established by an Act of Parliament in 1876. The settlement ran from Rongotea in the North to Taikorea in the South and Carnarvon in the West. Most of Glen Oroua was still part of the Oroua Downs estate and later the Greenaway estate. From 1876 the owners of the Oroua Downs Estate commenced a comprehensive drainage programme, including digging the Main Drain which made the swamp area of the district farmable.

Between 1890 and 1900 these estates were broken up including plans for a township in Glen Oroua, leading to the formation of the districts they are today.



*“ Memories of our district must go back to the days when the dairy factory, post office, church and the blacksmith shop were flourishing amenities. Now, like most country districts, we have only the school and the hall. These two we hold strongly to maintain our identity.”*

*Quote John McTavish*

### Some key dates:

**Glen Oroua School** 1903- Classes commenced on 9 March 1903, initially in the church, then in the hall until 1907. The building of the school in 1907 was a welcome change from the draughty hall. John Sanson donated an acre of ground for a playground as well as garden plots for growing vegetables and flowers. Early in 1969, the school committee learned that the school would be replaced by a new demountable structure and the new building was officially opened by Hon. Les Gandar early in 1970. In 1973, a new room was added in response to roll growth.

**Glen Oroua Hall 1903-** The GO Hall was built privately by Ralph Boswell, John Sanson, and William Farmer in 1903. School classes were conducted in the Hall in early 1904 and up until the school was finished in 1909.

**Glen Oroua Pool 1912-** The Glen Oroua pool was one of the first constructed in the Manawatu.

**Taikorea School 1888- 2002-**the first school in the district was opened in a shack on Holland's property, halfway along Kellow Rd between Taikorea Rd and Milner Rd. Approval was given for a school to be built in 1894. It was situated on 2 acres of land on Taikorea Rd. In early 1897 a new schoolroom was opened with a roll of 36 pupils.

**Taikorea Hall 1911-2009-** The Taikorea hall (1911) was relocated to Te Rangimarie Marae, Rangiotu in 2003.



### **References:**

- Glen Oroua-School and Community Author: H.T. McMillan Published 1979 Glen Oroua Jubilee Committee.
- Glen Oroua and Carnarvon- A history of two schools and their communities. Author M. A. McMillan Published 2003 Glen Oroua School Committee.
- Taikorea 1888-1988 published by the Taikorea centennial committee in June 1988. Sections were written by locals and edited by Susan Johnston and Remai Hehir. Some of the content came from a 1958 jubilee booklet published by the jubilee committee of that year.



## Community Planning Day

The community planning workshop was held in November 2022. This helped establish shared goals, ideas and identify some of the challenges for the community. Those who attended the workshop worked together to answer three questions:

1. What do you like most about living in Glen Oroua-Taikorea?
2. What would make Glen Oroua-Taikorea an even better community?
3. What are your priorities to improve Glen Oroua-Taikorea?

The answers generated from these questions have been directly entered into the content to this community plan.

**“The Community Planning Programme is a partnership between district communities and council to develop and implement shared visions”**

1. **What do you like most about living in Glen Oroua-Taikorea? (Please refer to the wordle on page 7.)**
2. **What would make Glen Oroua-Taikorea an even better community?**
  - Village signage welcoming travellers to Glen Oroua and Taikorea.
  - A coffee cart business site available at the hall for interested parties.
  - Provide opportunities regularly to promote connections between people.
  - Encourage more events and gatherings for community members to meet, reminisce, have fun, celebrate and use the Glen Oroua Hall whenever possible and practical for these gatherings.
  - Meeting and greeting new families to each district and provide them with information about the local district.
  - Provide opportunities for the elderly to come together- exercise classes, indoor bowling in the daytime, craft meetings etc..



### 3. What are your priorities to improve Glen Oroua-Taikorea?

- The Glen Oroua Hall is the hub of the community, so it needs to be looked after and updated inside.
- Glen Oroua hall renovations and maintenance will provide the opportunity for more local use of the hall.
- It is hoped the Community Committee would support the Glen Oroua Hall committee in maintaining and upgrading the hall facilities.
- Support those in the community who may need it. This may include a variety of actions including ride sharing to Palmerston North or Feilding for appointments etc., checking in on people, especially those living alone and those receiving social services.
- Listen to the ideas and opinions of the students at the school and encourage them to share their ideas about what their priorities for the district are.
- Provide published histories of each district on a noticeboard to be displayed in the Hall.
- Create a facebook page for the Community Committee where the administrator could publish information about community events and meetings, items of general interest to the community, brief items of interest about local history etc..





## Vision Statement

Our shared vision statement for Glen Oroua-Taikorea has been developed through a community workshop. The vision provides us with an overarching aspirational statement that is specific to our community.

“The Glen Oroua-Taikorea community is a diverse, inclusive and welcoming rural community that embraces and celebrates its heritage and identity while enjoying a high quality of life, the natural environment and enhancing the connections it makes through the community school and hall.”

Here are some other brainstormed vision statements from a meeting at the school....

A country lifestyle that provides a welcoming, caring, connected community, supporting diversity and creativity. We continue to live in a safe, inclusive community and enhance our quality of life and protect our environment.



## Directions Towards Improvement

We have identified three strategies to help implement our vision. Each strategy has a list of actions that we see as priority. This list of actions can be reviewed and updated on a regular basis making this community plan a 'living document' that's kept up to date and relevant.

- **People**

Our people feel welcomed, connected, safe and supported.

- **Environment**

We take pride and value our natural and social environment and our heritage and identity.

- **Infrastructure**

Our infrastructure and amenities are fit for purpose now and in the future. Glen Oroua hall renovations and maintenance will provide the opportunity for more local use of the hall.

## People

### Action Plan

Organise regular community and sporting events at the hall including community dinners, barbeques, fitness and exercise classes, dance classes, table tennis, badminton, and indoor bowls.

Investigate the feasibility of developing a community newsletter or joining with the school with a joint newsletter that can be emailed or delivered to all residents via the internet, Facebook or manually by delivering to rural letterboxes.

Celebrate our heritage and identity through stories told by our generational families who continue to live and farm in the area and publish these stories in a community newsletter

Investigate ways of improving the connection between the residents of Glen Oroua and the residents of Taikorea to ensure that the district is inclusive and connected

Investigate ways of welcoming new residents into the community eg welcoming packs which would include what's available in the area, key contacts, information on the interest groups operating, MDC blue rubbish bags drop off locations and the time and day for pick up

Organise at least one public meeting per year to encourage residents to get involved and to contribute their views on areas of importance that they wish the community committee to advocate to Council on their behalf

Strengthen links between the community and the school by encouraging support from the community for school events.

Continue to liaise with Neighbourhood Support Manawatu by engaging the community, sharing information and connecting people to other community services. Neighbourhood Support promote connectedness and community safety and educate about crime prevention.



# Environment

## Action Plan

Advocate for improved connectivity, improving cellphone coverage.

Advocate for the protection of our environment and rural farming community

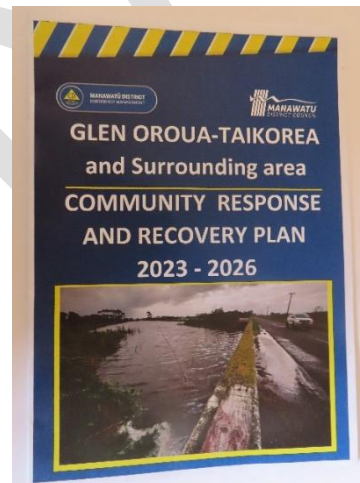
Develop a beautification plan which would include such things as flower/plant beds, a mural on the hall and information signage that focuses on our heritage and identity

Engage with our community in organising regular community working bees

Maintain accessibility to the Glen Oroua Hall.

Organise training for Civil Defence biennially with support from the Manawatu District Council.

Make every effort to maintain the traditions and values of living in a rural community.



# Infrastructure

## Action Plan

Partner with other stakeholders to develop a walkway to improve the safe movement between the school and the hall

Advocate to Council for an improved safe roading and footpath network

Investigate upgrading the hall as a fit for purpose facility. This facility is the main centre point for our community with the exception of the school

Advocate for improved connectivity including the investigation for having Wi-Fi available at the hall

Maintain the Glen Oroua Hall as a community hub.

